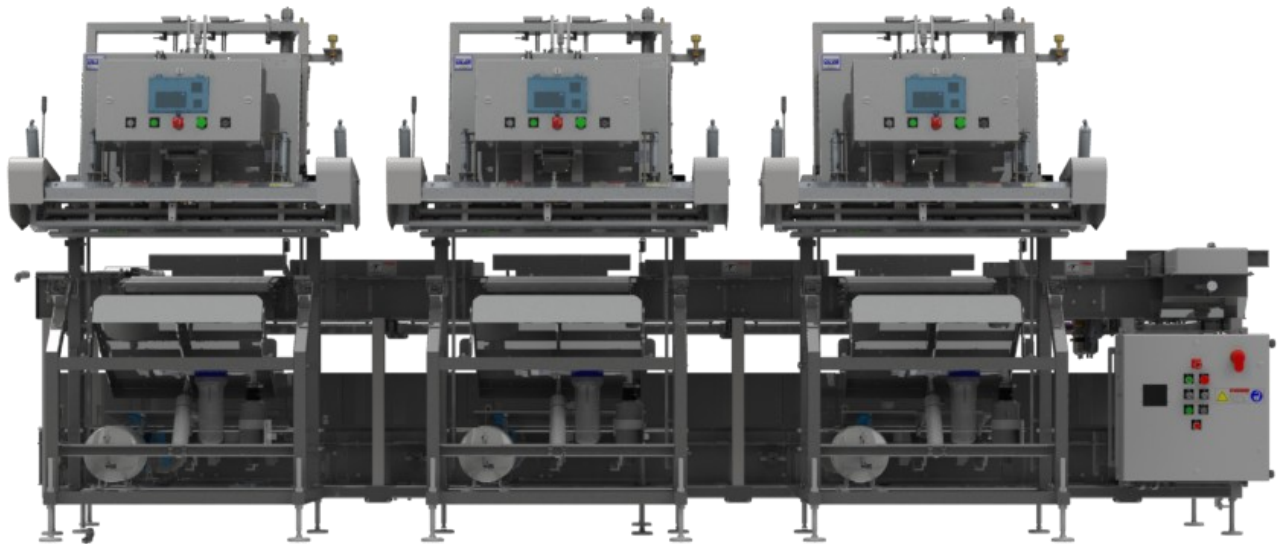


FRESH VAC®

**Modified Atmosphere
Packaging Machines**

A-200 Multiline



**FROM THE PIONEERS IN
MODIFIED ATMOSPHERE
PACKAGING**

Built for precision operation, the A-200 Multiline is designed for today's rigorous production schedules. It's fast, efficient and offers the consistent reproducibility to meet today's industry standards.

PLC controls with pre-set pack settings give it the flexibility to handle a wide range of package sizes and configurations.

Enhanced safety design, coupled with ease of installation and operations, makes the A-200 Multiline the worldwide leader.

View our videos on-line by scanning the QR code



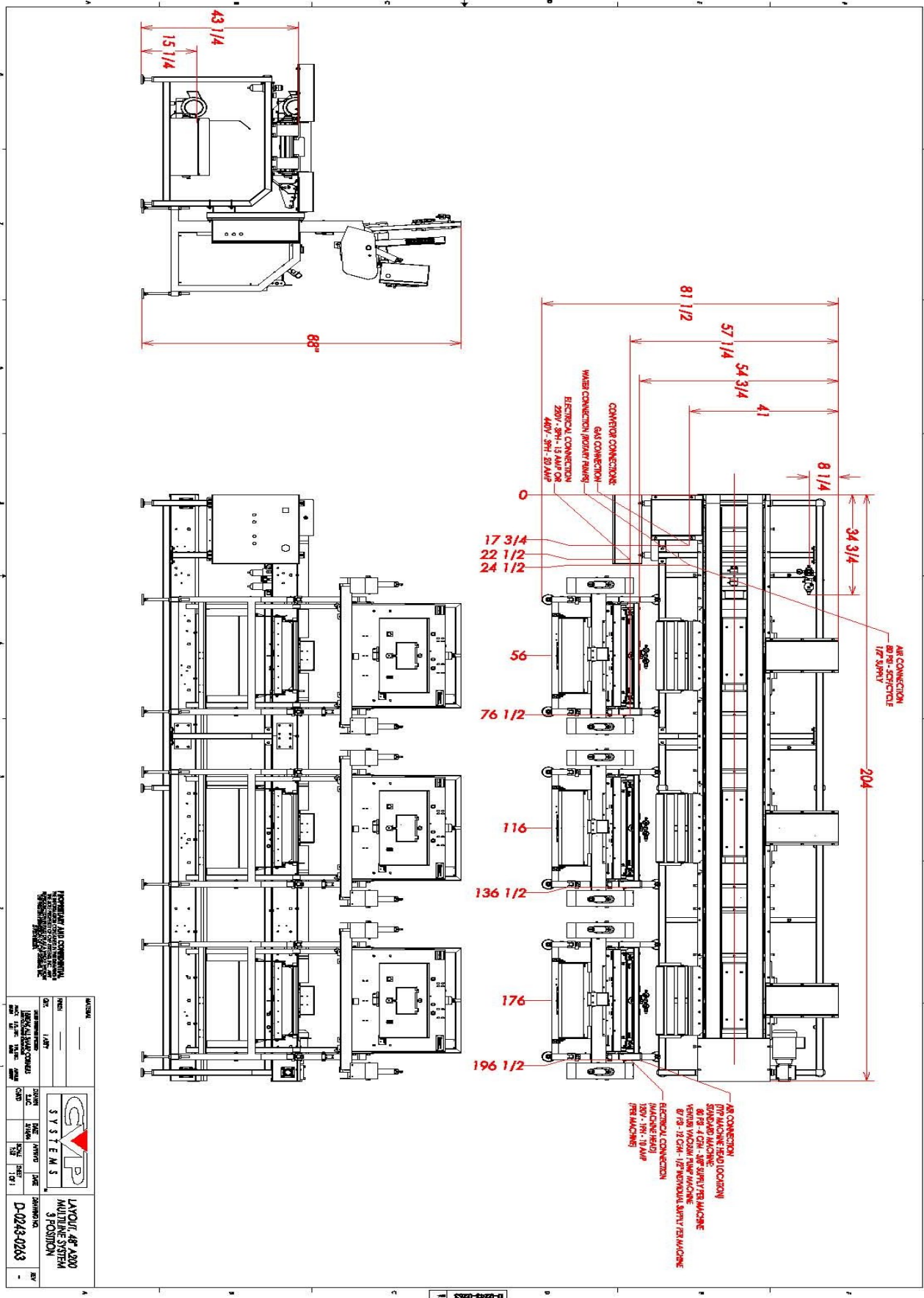
Or go to www.cvpsystems.com

*Cutting edge technology from the leader in modified atmosphere packaging.
Made with pride in the USA since*



1972

A-200 PLC MODEL 3 head Multiline and conveyor



COMPONENT AND COMPONENT
 IDENTIFICATION
 SYSTEMS

MATERIAL		DRAWING NO. D-0243-0243	
REV	DATE	BY	CHK
		LAYOUT OF A200 MULTILINE SYSTEM 3 POSITION	
REV	DATE	BY	CHK

A-200 MULTILINE DESIGN FEATURES



Hygienic Designs

- Clean-in-place system for internal cleaning.
- External wash down capability.
- Stainless steel snorkels.

Flexibility

- Specific option packages for meat, poultry, dairy, liquids, nuts, powders, grains and industrial goods.
- PLC controls with flexibility of pre-set controls.

Custom Options

- Custom PLC programs available.
- High and low Oxygen systems available.

Seal Integrity

- Digital temperature controls with hot bar or impulse wire systems.
- Seal bar profiles minimize leakers.
- Standard bag stretchers eliminate wrinkles, ensuring leak-free seals.

Reproducible Results

- Heat seal manifold with positive vacuum gas seal design.
- PLC controls with digital vacuum and gas flush controls with low level gas alarm.
- Accumulator tank for accelerated speed of operation.

Construction	Stainless Steel/Hard Anodized Aluminum
Dimensions	209" x 72" x 84" (5296mm x 1829mm x 2133mm)
Power Requirements	120/220 VAC 1 Phase, 20/10 Amp
Air Consumption	Max 5 CFM @ 80 psi/cycle
Manifold Length 48" (1220 mm)	Effective Seal Length 40" (1016mm)
Seal Head Range of Adjustment	7" (178mm) Variable Travel; 2" (51mm), 3" (76mm), 4" (102mm) Fixed Increments



2518 Wisconsin Avenue
Downers Grove, IL 60515 USA
Phone: (630) 852-1190
Website: www.cvpsystems.com
Email: sales@cvpsystems.com